

6-1-2021

An Expert System for Network Design Operation and Diagnosis.

Aida Abd El-Gawad

Computer & Control Department., Faculty of Engineering., El-Mansoura University., Mansoura., Egypt.

Follow this and additional works at: <https://mej.researchcommons.org/home>

Recommended Citation

Abd El-Gawad, Aida (2021) "An Expert System for Network Design Operation and Diagnosis," *Mansoura Engineering Journal*: Vol. 20 : Iss. 2 , Article 6.

Available at: <https://doi.org/10.21608/bfemu.2021.161277>

This Original Study is brought to you for free and open access by Mansoura Engineering Journal. It has been accepted for inclusion in Mansoura Engineering Journal by an authorized editor of Mansoura Engineering Journal. For more information, please contact mej@mans.edu.eg.

AN EXPERT SYSTEM FOR NETWORK DESIGN OPERATION AND DIAGNOSIS

نظام خبير فى تصميم و إدارة و تشخيص أعطال شبكات الحاسب

AIDA O. ABD EL-GAWAD

Computer & Control Dep. , Faculty of Engineering
EL-Mansoura University , EL-Mansoura , Egypt .

ملخص :

شبكات الحاسب لها العديد من الأنظمة المختلفة التى تتوقف على نوعية البرامج و المكونات المادية المستخدمة. الأداء الأفضل للمشغلات المتعددة لا يعتمد فقط على نوع برامج و كروت الربط المستخدمة بل أيضا على أسلوب التصميم و التنظيم لهذه الشبكات . معمار و تنظيم مثل هذه الشبكات يختلف باختلاف التطبيقات المصممة لأجلها كذلك نوعية و حجم الطلب عليها و نتيجة لذلك هناك صعوبة فى تصميم و إدارة و تشخيص أعطال هذه الشبكات. يقدم هذا البحث نظام خبير قادر على الاختيار الأمثل لنوعية البرامج و الكروت المستخدمة للشبكة كما يقدم أسلوب متميز فى تشخيص أعطال الشبكة و حراسها و كيفية التقلب عليها.

ABSTRACT

Computer networking has different approaches related to specific software and hardware used. High performance of multiprocessors depends on not only the type of software, and interfacing cards used but also how the network is designed and organized. Architecture and organization of such networks vary according to the application under consideration and the variety of requests and demands required from the network. As a result difficulties are imposed in designing, managing, and diagnosing networks. This paper introduces an expert system that is able to select the proper type and interfacing cards of the network and also, it has an excellent methodology for network fault diagnoses. In addition to, it has a very simple procedure for non expert user for handling any type of networking software .

INTRODUCTION

Artificial intelligence may be defined as a branch of computer science that is concerned with the automation of intelligent behavior. This implies theoretical principles that include data structures used in knowledge representation , algorithms needed to apply that knowledge in search and inference mechanisms, and both language and programming methodologies used in implementing such techniques.

Artificial intelligence has many branches such that :-

- * Speech recognition ,**
- * Natural language processing ,**
- * Robotics ,**
- * Computer vision and image processing system**
- * Expert system :**

Expert system is a problem-solving systems that reach expert or at least highly competent levels of performance, and that this paper is interested in.

Modem networks use a layered architecture in which each layer is a logical entity that performs certain functions. The services performed by the highest layer are for the network users directly. Each layer provides services for the next layer above it and shields the details of how the services are carried out from this higher layer. Information flow from one level to another depends on the type of interfacing used between each pair of adjacent layers. The parameter setting of such an interface is very important to guarantee accurate and secured data flow . A defined set of different protocols have been introduced each of which defined different set of rules which is necessary for each layer to carry out it's conversation to the corresponding layer at each communication node[1- 4]. The last few years have witnessed an increasing sophistication in system networking in both hardware and software aspects. Different software packages are now available [5,6] each of which has a different procedure for installation and parameter setting as well as suitable type of network cards. These make the decision of selection network type, parameter setting, and system configuration for both master and servers beside fault system and diagnosis for the different types of networks is a real problem .

In this study an expert system which deals with system networking selection and its hardware and software setting problems is introduced. The system has an excellent methodology for fault diagnoses of network and introduces a very simple procedure for non expert user to define the most suitable network and how to organize and manage. What distinguishes an expert system from a conventional program is not just its expertise, but the way that the expertise is sorted and processed. The proposed system is designed In such a way that make it capable of performing the following:-

- (1) Problem solving**
- (2) Interactive explanations**
- (3) Knowledge acquisition**

Besides , like all software , it is very fast , easy to maintain , and user-friendly .

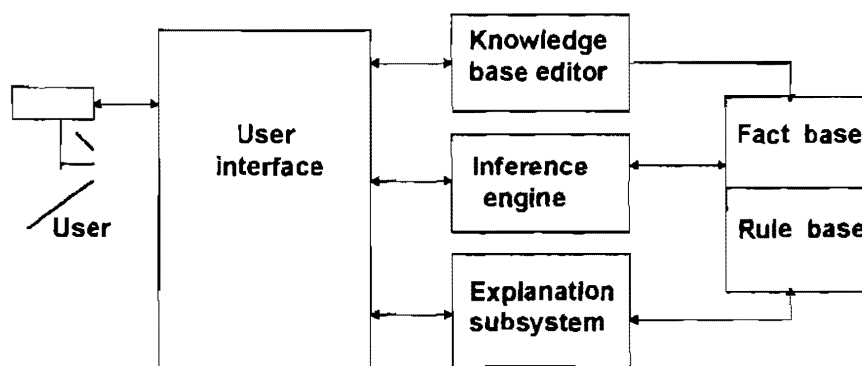
Expert system design:

Many languages can be used for building expert systems such as PROLOG, OPS5 and LISP , in this work Prolog (PROgramming in LOGic) is used for building the control part of the proposed system . Because It is a descriptive language uses facts and rules and its program essentially consists of a list of logic statements , either in the form of facts or in the form of rules and it can make deduction . The expert system consists of many modules all of them have much graphics , sound and animation , therefore they are designed using C language. The control part of the system defines the type of network to be handle, a certain subject from this type, and which module of this subject is to be executed .

The system is designed in four components , these are :

- (1) User interface
- (2) Inference engine
- (3) knowledge-base
- (4) Explanation facilities

this is shown in figure(1-a) .



Figure(1-a) Expert system components

A list of a computer program for the module of file server is given in appendix a as a sample module. A list of the prolog program for the control part is listed below.

```

domains
file=myfile
predicates
goto(symbol,symbol,symbol)
goto1(symbol,symbol)
print_contents(integer)
intro(symbol)

```

subject

clauses

/*-----THE FIRST SCREEN-----*/

subject:-

```

graphics(5,1,3),
makewindow(1,1,1,"",0,0,25,80),
makewindow(2,1,1,"NETWORKS",2,2,21,76),
cursor(4,3),
write("WHICH TYPE DO YOU WANT      ?"),
cursor(17,3),write("  NOVELL          PCLAN          VMS"),
cursor(4,48),readln(X),intro(X),
cursor(6,3),
write("WHICH MODULE DO YOU WANT      ?"),
cursor(17,3),write(" DESCRIPTION  REQUIRMENTS
TROUBLESHOOTING      INSTALLATION  "),
cursor(6,48),readln(Y),
cursor(8,3),
write("WHICH MODULE DO YOU WANT      ?"),intro(Y),
cursor(8,48), readln(Z) ,
cursor(10,3),
write("WHICH MODULE DO YOU WANT      ?"),
intro(Z),
cursor(10,48),readln(L),
goto(Y,Z,L),subject.

```

/*-----PRINTING THE CONTENTS OF THE FILE-----*/

print_contents(N):-

```

N<12,
not(eof(myfile)),readln(K),
write("\n",K),
N1=N+1 ,
print_contents(N1).

```

print_contents(N):-

```

N=12,
writedevice(screen),
write("\n\n\n\n          PRESS ANY KEY TO CONTINUE"),
readdevice(keyboard),
readchar(_),
clearwindow,
readdevice(myfile),
print_contents(1).

```

print_contents(_):-

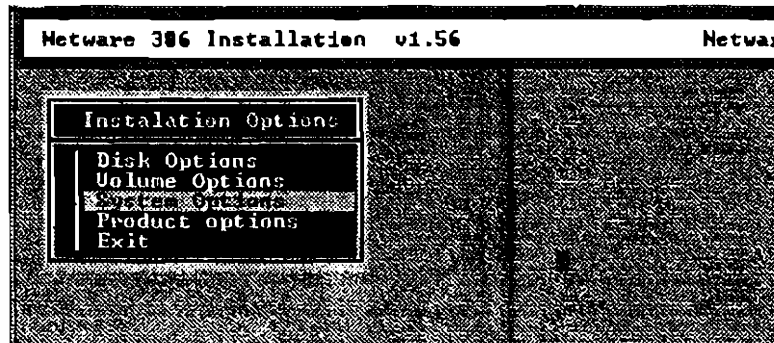

```

goto("DESCRIPTION","NETWORK BASIC PARTS","FILE SERVER):-
    openread(myfile,"file_s"),readdevice(myfile),
    print_contents(1) .
goto("DESCRIPTION","NETWORK BASIC PARTS","WORKSTATION):-
    openread(myfile,"work_s"),readdevice(myfile),
    print_contents(1) .
/*-----THE SECOND MODULE-----*/
goto("REQUIREMENTS","HARDWARE","HARD DISK):-
    openread(myfile,"hard_d"),readdevice(myfile) , print_contents(1) .
goto("REQUIREMENTS","HARDWARE","PROCESSOR):-
    openread(myfile,"procesor"),readdevice(myfile),
    print_contents(1) .
goto("REQUIREMENTS","HARDWARE","RAM):-
    openread(myfile,"ram"),readdevice(myfile),
    print_contents(1) .
/*****/
goto("REQUIREMENTS","SOFTWARE","FILE SERVER):-
    openread(myfile,"file_svr"),readdevice(myfile),
    print_contents(1) .
goto("REQUIREMENTS","SOFTWARE","WORKSTATION):-
    openread(myfile,"work_st"),readdevice(myfile),
    print_contents(1) .
/*-----THE THIRD MODULE-----*/
goto1("TROUBLESHOOTING","COMMUNICATION):-
    system("communc.exe").
goto1("TROUBLESHOOTING","FILE SERVER):-
    system("file_v.exe").
goto1("TROUBLESHOOTING","WORKSTATION):-
    system("work_st.exe").
goto1("TROUBLESHOOTING","APPLICATION):-
    system("applic.exe").
/*-----THE FOURTH MODULE-----*/
goto1("INSTALLATION","DISK OPTIONS):-
    system("disk.exe").
goto1("INSTALLATION","VOLUM OPTIONS):-
    system("volume.exe").
goto1("INSTALLATION","SYSTEM OPTIONS):-
    system("system.exe").
/*****/
goal
subject.

```

User interface :

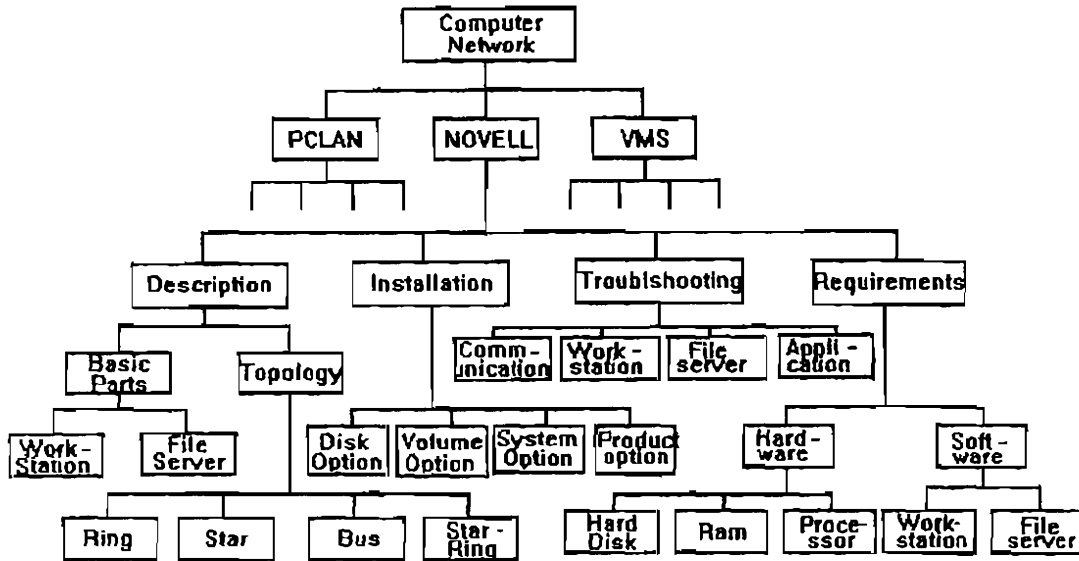
Many menus are designed for user interfacing. The user interface is the way by which the user communicates with the expert system , and it is built in menus. They are used to select different functions of the system and different parts in each function.A sample of such menus is given in figure(2) .



Figure(2) Installation of novell netware 386

Inference engine :

Inference engine is implemented by different program modules for Description , Requirements , Troubleshooting , Installation. Inference engine is the part of the program that makes the system knows which knowledge-base is required, so it is the linker of the expert system, embodying the main control structures and algorithms . The cycle of the inference engine is designed to select an inference to execute and a data file to manipulate. Using menus you have first to select the type of network NOVELL , PCLAN or VMS , second the required module you want to deal with Description , Installation , Troubleshooting or Requirements after that the system searches about the predicate which satisfies all previous requirements and execute it .Figure(3) shows the tree diagram of the proposed system. Samples of menus are shown in figures(4-6).The Figures show the novell network installation procedure. Methods for interconnecting local area networks are also shown in figure(6).



Figure(3) Tree representation of the system

KNOWLEDGE - BASE :

The knowledge-base comprises a series of rules and facts related to the module which we are dealing with .

Rules:

It receives the type of the selected network in order to display and define its main function.

EX.

If the function computer network is selected , the predicate :

intro ("COMPUTER NETWORK ") is executed . This predicate is then display the different types of computer network such as Novell , Pclan and Vms , and the user have to select one of them.

If the novell network is chosen ,the predicate :

intro ("NOVELL ") is then executed and displays the different modules of this network , such as Description , Requirements , Troubleshooting and Installation . Again the user has to define which module he is interested in .

Installation

FILE SERVER MINIMUM REQUIREMENT FOR NetWare 3.11 OPERATING SYSTEM

To install the NetWare 3.11 on your fileserver it must have minimum requirements :-

- 1- 80 MB HardDisk
- 2- 4 MB RAM
- 3- 386 processor

Press any Key to continue

INSTALLATION

ON SERVER

Requirements to install netware 3.11

- * Min. of 80 MB HD
- * 4 MB RAM on File Server
- * 386 Processor or later

>>>>

HD Partitioning:

HD must be partitioned for NetWare requirements.

- * FDISK :

HD must be partitioned into Primary Dos Partition and make it active ,and leave the remainder available.

- * FORMAT :

A) FORMAT C:/U/S

>>>>

NetWare Partition

005 partition

Press 'Y'
For Fdisk Explanation Or
Esc to continue

INSTALLATION

Major Software Components

A Novell Local Area Network has two major software components:

- * NETWARE OPERATING SYSTEM

The NetWare op. sys. resides at the file server and controls the shared file server devices.

- * WORKSTATION SOFTWARE

The local op.sys.(DOS) resides at the U.S. Acting as a traffic director between NetWare and the local op sys. is a software program called the shell(DOS MACHINES). the shell intercepts each request made by the user and directs it to either the file server or the local op.sys. depending on the type of request.

Press 'Y' for previous Press 'N' for next Esc to exit

INSTALLATION

Copy System files

```

(c)>copy a:.*
Insert 2nd system disk (c)>copy a:.*
Insert 3rd system disk (c)>copy a:.*
    
```

FILE SERVER

>>>>follow the following steps:

```

C>SERVER
Novell NetWare v3.11 (100 user) 2/20/91
Processor speed :
<Type SPEED at the command prompt for an explanation of
the speed rating>
File Server name : SERVER
IPX Internal network number: 20
(c) Copyright 1983-1991 Novell Inc.All Rights Reserved.
Monday October 25,1993 8:58pm
    
```

Esc typed by the user

FL : help ESC : to exit help F4 : to change

Figure (4) Novell Software and Hardware Installation

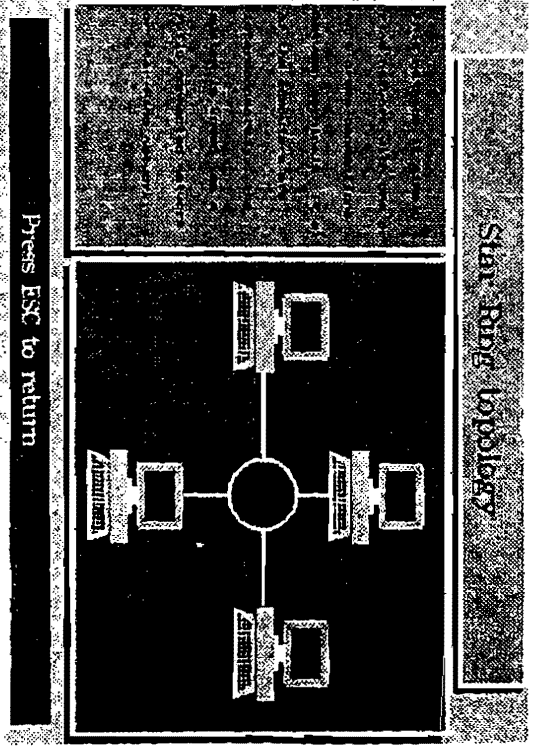
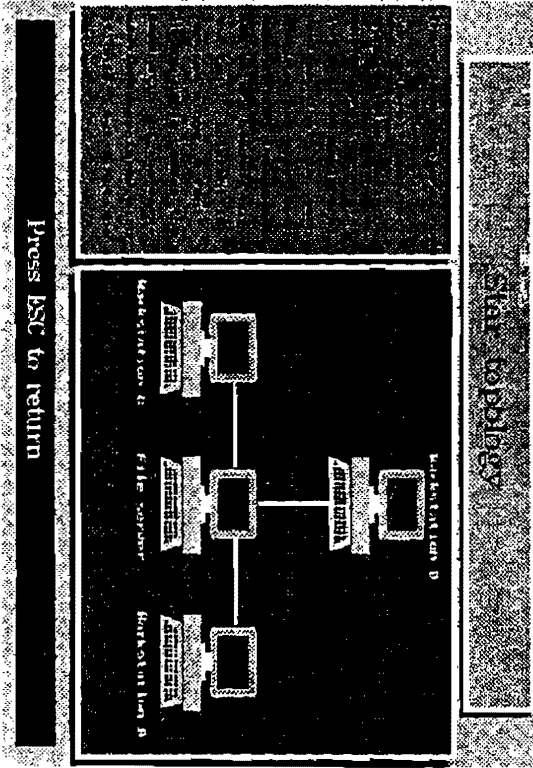
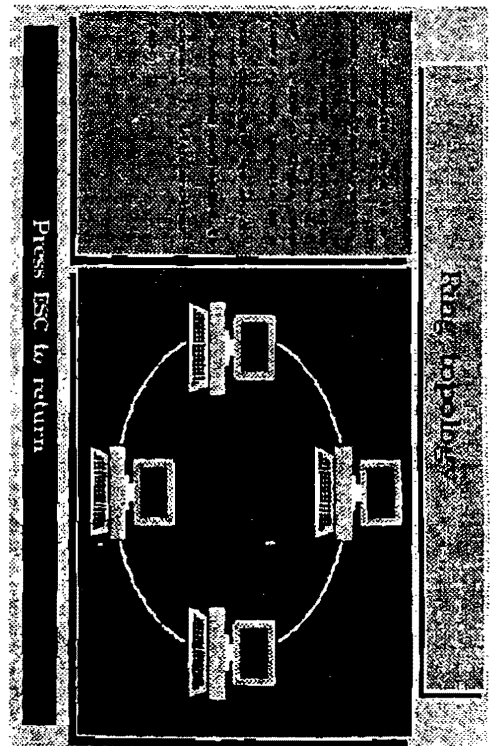
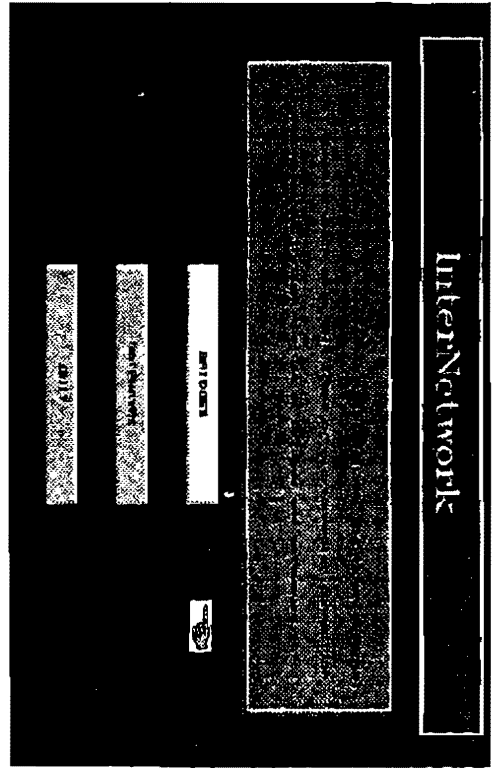


Figure (5) Network Topology

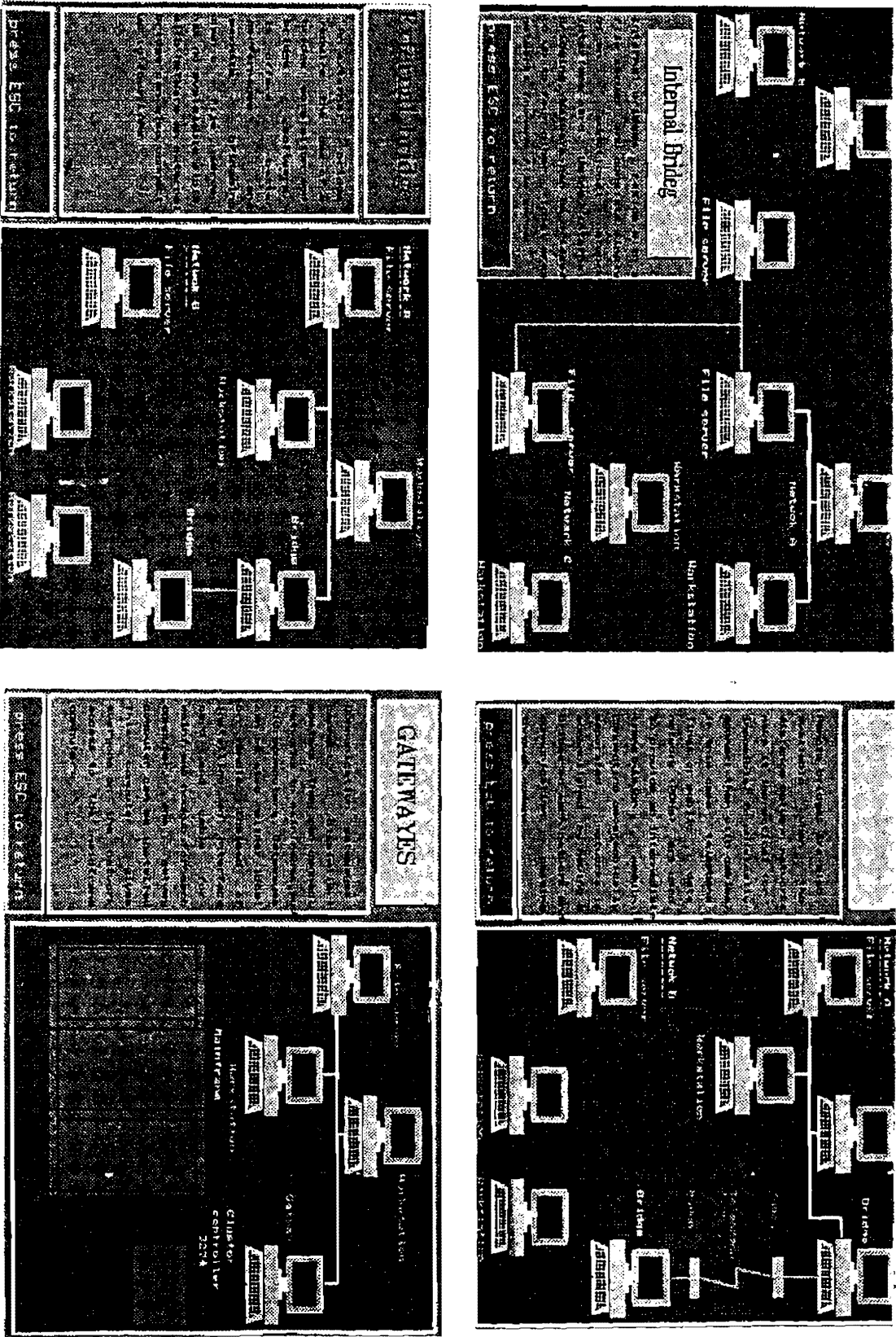


Figure (6) Methods for Interconnecting Local Area Networks

Common problem Menu

- Application Problems
- File server Problems
- Hardware Problems
- Installation Problems
- Quit

Demonstrates the possible problems occurring when an application runs

Troubleshooting Menu

- Flow chart
- File server Problems
- Hardware Problems
- Installation Problems
- Quit

demonstrates the flow chart of the possible errors of network

E. 82 Dr. AIDA O. ABD FI-GAWAD

FILE SERVER PROBLEMS

- 1- Control Commands cannot be entered
- 2- The file server does not work
- 3- The file server is slow
- 4- The file server is noisy
- 5- A file is not saved
- 6- A file is not deleted
- 7- The file server is not working
- 8- The file server is not working
- 9- A file is not saved
- 10- A file is not deleted

1. Press the **ESC** key to enter the menu.

2. The file server does not work.

3. The file server is slow.

4. The file server is noisy.

5. A file is not saved.

6. A file is not deleted.

7. The file server is not working.

8. The file server is not working.

9. A file is not saved.

10. A file is not deleted.

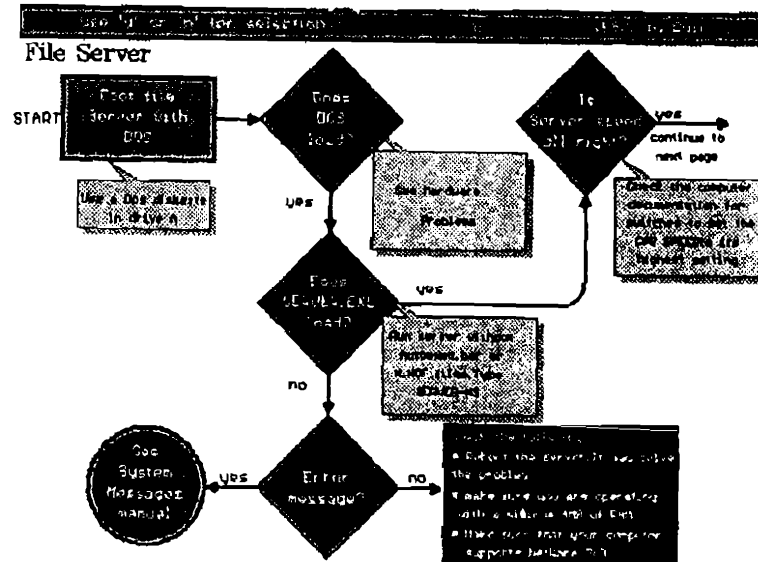


Figure (7) Procedure for Novell Network Diagnosis

EX.

If we select the Troubleshooting module, then it execute the predicate:

intro ("Troubleshooting ") is then executed and then displays the different parts of this module , such as:

Communication , Workstation , File server and Application problems.

Figure(7) show the designed procedure for novell network diagnoses.

Facts :

The facts of the knowledge - base are designed in the form :

computer network (novell , pclan , vax) ,

novell (description,requirements,troubleshooting,installation) ,

description (topology , network basic parts) ,

requirements (hardware , software)

troubleshooting (communication , workstation , file server , application problems) ,

installation (disk options , volume options , system options),

topology (bus , star , ring , star-ring) ,

network basic parts (file server , workstation) ,

hardware (processor , hard disk , ram) ,

software (file server , workstation) .

Explanation facility :

Explanation facilities are implemented through a very pretty helpful screens .

Conclusion:

In this paper an expert networking system is introduced. The system is capable of selecting the proper networking type according to the user requirements , accurate and secured data transfer, and high performance multi-processors. Also the system has an excellent methodology for fault diagnoses of networks and introduces a very simple procedure for non expert

user to set the network parameters and guide him in organizing, and managing the network . The system is easy to maintain, having fast response, and user friendly.

References:

- 1- "Computer Network"
Andrew S Tanenbaum, Prentice-Hall 1989
- 2- "Data Communications, Computer Network and OSI"
Fred Halsall, Addison-Wasley 1988
- 3- " Local Area Network Architectures"
David Hutchison, Addison-Wasley 1988
- 4- "Telecommunication Networks:Protocols, Modeling and Analysis"
Mischa Schertz, Addison-Wesley 1988
- 5- "Artificial Intelligence and The Design of Expert Systems"
G. F. Luger and W. A. Stubble field , The Benjamin / Cummings
Publishing Company, Inc. , 1990 .
- 6- D. L. Smith , " the ACT : Automatic Computer Troubleshooting project "
22nd southeastern symp. On system theory, IEEE computer soc. press,
pp 383-293 , 1990 .
- 7- "Local Network Performance"
William Stallings , February 1984 - vol 22 , no. 2 ,IEEE Communication
Magazine.

APPENDIX A

Computer program for the module of file server troubleshooting.

```

#include <mygwind.h>
#include <mouse.h>
#include <key.h>
#include <stdio.h>
#include <ctype.h>
#include <bios.h>
main( )
{
int dr=DETECT;
int m;
initgraph( &dr,&m,"" );
cont( );
closegraph( );
return( 0 );
}
voise( int i )
{ sound( 100 ); sound( i/5 ); delay( 105 ); nosound( ); return( 0 ); }
rect( int x, int y, int c ) /*length=130 width=70*/
{ setcolor( 5 ); setfillstyle( 1, c ); bar( x, y, x+130, y+70 ); setcolor( 15 ); moveto( x+4, y+4 );
linere( 122, 0 ); linere( 0, 62 ); linere( -122, 0 ); linere( 0, -62 ); return( 0 ); }
startstop( int x, int y, int c ) /*center at x,y+53 head at x,y+3*/
{ setcolor( 5 ); setfillstyle( 1, c ); fillellipse( x, y+53, 50, 50 ); setcolor( 15 );
circle( x, y+53, 46 );
return( 0 ); }
diamond( int x, int y, int c ) /* diamond shape at x,y top 60 */
{ setcolor( c ); moveto( x, y ); linere( 60, 60 ); linere( -60, 60 ); linere( -60, -60 );
linere( 60, -60 ); setfillstyle( 1, c ); floodfill( x, y+50, c ); setcolor( 15 ); moveto( x, y+4 );
linere( 56, 56 ); linere( -56, 56 ); linere( -56, -56 ); linere( 56, -56 ); return( 0 ); }
commdown( int x, int y, int c ) /* down comment at x,y */
{ setcolor( 8 ); setfillstyle( 1, 8 ); bar( x, y+20, x+130, y+100 ); moveto( x, y ); setcolor( 6 );
linere( 25, 15 ); linere( 100, 0 ); linere( 0, 80 ); linere( -130, 0 ); linere( 0, -80 ); linere( 20, 0 );
};
lineto( x, y ); setfillstyle( 1, c ); floodfill( x+30, y+40, 6 ); return( 0 ); }
uparrow( int x, int y, int yd, int c ) /*start at x,y with head end atx, y*/
{ setcolor( c ); setlinestyle( 0, 0, 3 ); moveto( x, y ); linere( 4, 8 ); linere( -8, 0 ); lineto( x, y );
linere( 0, yd ); setlinestyle( 0, 0, 0 ); return( 0 ); }
dnarrow( int x, int y, int yd, int c ) /*start x,y end at yd with head*/
{ setcolor( c ); setlinestyle( 0, 0, 3 ); moveto( x, y ); linere( 0, yd ); linere( 4, -8 );
linere( -8, 0 ); linere( 4, 8 ); setlinestyle( 0, 0, 0 ); return( 0 ); }
rarrow( int x, int y, int len, int c ) /*start at x,y head at end*/
{ setcolor( c ); setlinestyle( 0, 0, 3 ); moveto( x, y ); linere( len, 0 ); linere( -8, 4 );
linere( 0, -8 ); linere( 8, 4 ); setlinestyle( 0, 0, 0 ); return( 0 ); }
larrow( int x, int y, int len, int c ) /*start at x,y end at yd with head*/
{ setcolor( c ); setlinestyle( 0, 0, 3 ); moveto( x, y ); linere( -len, 0 ); linere( 8, -4 );
linere( 0, 8 ); linere( -8, -4 ); setlinestyle( 0, 0, 0 ); return( 0 ); }
commrtup( int x, int y, int c ) /*put a comment at up but to rihgt*/
{ setcolor( 8 ); setfillstyle( 1, 8 ); bar( x, y-110, x+130, y-32 ); moveto( x, y ); setcolor( 6 );
linere( 25, -25 ); linere( 100, 0 ); linere( 0, -80 ); linere( -130, 0 ); linere( 0, +80 ); linere( 20, 0 );
lineto( x, y ); setfillstyle( 1, c ); floodfill( x+50, y-50, 6 ); return( 0 ); }
commup( int x, int y, int c ) /* up up in the middel app*/
{ setcolor( 8 ); setfillstyle( 1, 8 ); bar( x-60, y-105, x+65, y-35 ); moveto( x, y );
setcolor( 6 ); linere( -5, -30 ); linere( 65, 0 ); linere( 0, -70 ); linere( -125, 0 );
linere( 0, 70 ); linere( 45, 0 ); lineto( x, y ); setfillstyle( 1, c ); floodfill( x+50, y-50, 6 );
return( 0 ); }

```



```

upleft(int x,int y,int c)
{ setcolor(8) ; setfillstyle(1,8) ; bar(x-110,y-110,x+20,y-32) ; setcolor(6);
moveto(x,y) ; linerel(-5,-25) ; linerel(20,0) ; linerel(0,-80) ; linerel(-130,0);
linerel(0,80) ; linerel(97,0) ; lineto(x,y) ; setfillstyle(1,c) ; floodfill(x-50,y-50,6);
return(0) ; }
ser1() /******SERVER*****/
{ wind(1,1,639,479,15,4,0,0) ; trst( ) ; settextstyle(1,0,2);setcolor(0);
outtextxy(22,39," File Server") ; graphdefaults( );
rect(40,60,1);a11( ) ; /***a1*****/
rarrow(170,95,35,1) ; /***a1*****/
diamond(266,35,1) ; a12( ) ; /***a2*****/
dnarrow(265,155,30,1) ; /***a2*****/
diamond(265,185,1) ; a13( ) ; /***a3*****/
dnarrow(265,305,30,1) ; /***a3*****/
diamond(265,335,1) ; a14( ) ; /***a4*****/
setcolor(1) ; setlinestyle(0,0,3) ; line(325,245,460,245) ; arc(460,225,270,360,20);
uparrow(480,155,70,1) ; larrow(205,395,40,1) ;
startstop(115,342,1) ; a15( ) ; /***a5*****/
diamond(480,35,1) ; a16( ) ; /***a6*****/
rarrow(540,95,60,1) ; rarrow(325,395,35,1) ; wind(360,340,560,460,1,0,0,0);
/******COMMENTS*****/
commdown(305,105,7) ; commdown(510,125,7) ; commdown(315,240,7) ;
commdowns(80,130,7) ; yesandno1( ) ; comser1( ) ; contser1( ) ; return(0);
contser1( )
{ char key;
do
{
voise(1000) ; rect(40,60,1);a11( ) ; /***a1*****/
delay(250) ; rect(40,60,5);a11( ) ; /***a1*****/
delay(250) ; }
while(bioskey(1)!=0);
key=getch( ) ;
while(1) {
switch(key){
case ESC : return(0);
default : goto dia;
break; } }
dia:
rarrow(170,95,35,5); /***a1*****/
dia1: do
{ voise(1000) ; delay(250) ; diamond(265,35,1) ; a12( ) ; /***a2*****/
delay(250) ; diamond(265,35,5) ; a12( ) ; } /***a2*****/
while(bioskey(1)!=0) ; key=getch( ) ;
while(1) { switch(key)
{
case 27: return(0);case 'y': dnarrow(265,155,30,5); /***a2*****/
dia2:
do{ voise(1000) ; delay(250) ; diamond(265,185,1) ; a13( ) ; /***a3*****/
delay(250) ; diamond(265,185,5) ; a13( ) ; } /***a3*****/
while(bioskey(1)!=0) ; key=bioskey(0);
while(1)
{ switch(key)
{ case ESC: return(0);case 'y' : setcolor(5) ; setlinestyle(0,0,3);
line(325,245,460,245) ; arc(460,225,270,360,20) ; uparrow(480,155,70,5);

```

```

{ case ESC: return(0);case 'y': setcolor(5) ; settextstyle(0,0,3);
line(325,245,460,245) ; arc(460,225,270,360,20) ; upar: (480,155,70,5);
dia3: do{ delay(250); diamond(480,35,1); a16( ) ; /*a6*/
delay(250) ; diamond(480,35,5); a16( ) ; /*a6*/
voise(1000) ; }
while(bioskey(1)==0);
key=getch( );
while(1)
{ switch(key)
{ case 'y': rarrow(540,95,60,5) ; delay(400) ; ser2( ) ; return(0) ;
case ESC: return(0); default: goto dia3 ; } }
break ; case 'n' : dnarrow(265,305,30,5); /*3*/
dia4: do { delay(250) ; diamond(265,335,1) ; a14( ) ; /*a4*/
delay(250) ; diamond(265,335,5); a14( ) ; /*a4*/
voise(1000) ; } while(bioskey(1)==0); key=getch( ) ;
while(1)
{ switch(key)
{ case 'y': larrow(205,395,40,5); startstop(115,342,5);a15();return(0);
case 'n' : rarrow(325,395,35,5); wind(360,340,560,460,10,0,0,0); setcolor(0);
settextstyle(2,0,4) ; settextjustify(0,2) ;
outtextxy(370,347,"Check the following:"); setcolor(15);
outtextxy(370,363," Reboot the server.It may solve ");
outtextxy(370,378,"the prot em");
outtextxy(370,395," make sure you are operating ");
outtextxy(370,410," with a minimum 4MB of RAM");
outtextxy(370,427," Make sure that your computer ");
outtextxy(370,442," supports NetWare 368") ; return(0);
case ESC: return( 0 );default : goto dia4 ; } } return(0);
default: goto dia2 ; break ; } break ; }
goto dia1; break ; } } return(0) ; }
yesandno1( )
{ settextstyle(2,0,5) ; setcolor(0) ; outtextxy(240,160,"yes");
outtextxy(240,310,"no") ; outtextxy(350,230,"yes") ;
outtextxy(188,385,"yes") ; outtextxy(340,385,"no");
outtextxy(550,85,"yes") ; settextstyle(2,0,4);
outtextxy(565,105,"continue to"); outtextxy(565,120,"next page");return(0); }
comser1( )
{ settextstyle(2,0,4) ; setcolor(0) ;
outtextxy(110,160,"Use a Dos diskette"); outtextxy(110,175,"in drive A");
outtextxy(340,150," See hardware " ) ;
outtextxy(340,175," Problems") ;
outtextxy(565,145," Check the computer") ;
outtextxy(565,160,"documentation for");
outtextxy(565,175," switches to set the");
outtextxy(565,190,"CPU SPEEDto its");
outtextxy(565,205,"highest setting");
outtextxy(365,270," Run server without");
outtextxy(365,285," Autoexec.bar or");
outtextxy(365,300,".NCF files.Type");
outtextxy(365,315,"SERVER-NS");
setcolor(13) ; settextjustify(0,2) ;
outtextxy(370,347,"Check the following:"); setcolor(15);
outtextxy(370,363," Reboot the server.It may solve ");
outtextxy(370,378,"the problem");

```

```

outtextxy(370,395," make sure you are operating ");
outtextxy(370,410," with a minimum 4MB of RAM");
outtextxy(370,427," Make sure that your computer ");
outtextxy(370,442," supports NetWare 368");return(0); }
a11( )
{ settxtstyle(2,0,5); settextjustify(1,1); setcolor(0);moveto(21,95);
outtext("START"); setcolor(15);moveto(105,75);outtext("Boot file");
moveto(105,92);outtext("Server with");
moveto(105,109);outtext("DOS"); return(0); }
a12( )
{ moveto(265,75);outtext("Does"); moveto(265,92);outtext("DOS");
moveto(265,109);outtext("load?"); return(0); }
a13( )
{ moveto(265,225);outtext("Does");
moveto(265,242);outtext("SERVER.EXE");
moveto(265,259);outtext("load?"); return(0); }
a14( )
{ moveto(265,385);outtext("Error");
moveto(265,402);outtext("message?"); return(0); }
a15( )
{ moveto(115,365);outtext("See");
moveto(115,382);outtext("System");
moveto(115,399);outtext("Messages");
moveto(115,416);outtext("manual"); return(0); }
a16( )
{ moveto(480,75);outtext("Is");
moveto(480,92);outtext("Server speed");
moveto(480,109);outtext("all right?"); return(0); }
ser2( )
{wind(1,1,639,479,15,4,0,0); trst(); graphdefaults( );
rarrow(170,95,35,1); /*1*/
diamond(400,35,1); a22( ); /*a2*/
dnarrow(400,155,30,1); /*2*/
diamond(400,185,1); a23( ); /*a3*/
dnarrow(400,305,30,1);
diamond(400,335,1); a24( ); /*a4*/
commrtup(445,390,7); rarrow(460,95,120,1);rarrow(100,95,40,1);
diamond(200,35,1); a21( ); /*a1*/
rarrow(260,95,80,1);larrow(340,245,80,1);
startstop(210,192,1); a25( ); /*a5*/
setlinestyle(0,0,3); setcolor(1); line(400,455,400,465);
larrow(400,465,90,1); larrow(340,395,30,1); setfillstyle(1,1);
wind(40,345,310,410,1,0,0,0); /*up wind load diskset*/
wind(40,415,310,470,1,0,0,0);
setcolor(1); /*down wind*/
line(200,155,200,180); larrow(200,180,20,1); wind(40,145,180,195,1,0,0,0);
yesandno2( ); comser2( ); /*wind to enter number*/
contser2( ); return(0); }
contser2( )
{ char key; rarrow(100,95,40,5);
dia1: do{
diamond(200,35,1); a21( ); /******a1*****/
delay(250); diamond(200,35,5); a21( ); /******a1*****/
delay(250); voice(1000); }

```

```

while(bioskey(1)!=0);
key=getch();
while(1) { switch(key) { case 'y': rarrow(260,95,80,5);
dia2: do{ voice(1000); diamond(400,35,1); a22(); /*a2*/
delay(250); diamond(400,35,5); a22(); /*a2*/
delay(250); }while(bioskey(1)!=0);
key=getch( );
while(1)
{ switch(key) {
case 'y': rarrow(460,95,120,5); delay(400);
ser3( ) ; return(0) ; case 'n': darrow(400,155,30,5); /*2*/
dia3: do{ voice(1000); diamond(400,185,1); a23( ); /*a3*/
delay(250); iamond(400,185,5);a23( ); /*a3*/
delay(250); } while(bioskey(1)!=0); key=getch( );
while(1)
{ switch(key) { case 'y': larrow(340,245,80,5);
startstop(210,192,5); a25(); /*a5*/
return(0); case 'n': darrow(400,305,30,5);
dia4: do{ voice(1000);
diamond(400,335,1); a24( ); /*a4*/
delay(250);
diamond(400,335,5); a24(); /*a4*/
delay(250);
} while(bioskey(1)!=0);
key=getch( );
while(1)
{ switch(key) {
case 'y':
larrow(340,395,30,5);
wind(40,345,310,410,10,0,0,0); /*up wind load diskset*/
settextstyle(2,0,4); setcolor(0); settextjustify(0,2);
outtextxy(45,350,"Load the DISKSET to check the Hard Disk");
outtextxy(45,365,"and controller configuration .");
outtextxy(45,380,"Make sure each Hard Disk is assigned to ");
outtextxy(45,395,"the correct controller number.");return(0);
case 'n':
setlinestyle(0,0,3);setcolor(5);line(400,455,400,465);larrow(400,465,90,5);
wind(40,415,310,470,10,0,0,0);
settextstyle(2,0,4);
setcolor(15);
settextjustify(0,2);
outtextxy(45,420,"Select the driver settings to match the ");
outtextxy(45,435,"hardware settings. or set the disk ");
outtextxy(45,450,"coprocessor board to match the driver .");return(0);
case ESC: return(0);default:goto dia4; } }
case ESC: return(0); default:goto dia3; } }return(0);
case ESC: return(0); default:goto dia2; } }
case 'n': setcolor(5); /*down wind*/
larrow(200,180,20,5); wind(40,145,180,195,10,0,0,0);settextstyle(2,0,4);
setcolor(15); settextjustify(0,2); outtextxy(47,157,"Enter a number that is");
outtextxy(47,172,"not used by any server"); return(0); case ESC: return(0);
default: goto dia1; } } return(0); }
yesandno2( )
{ settextstyle(2,0,5); setcolor(0); outtextxy(270,85,"yes");

```

```
outtextxy(470,85,"yes"); outtextxy(370,320,"no"); outtextxy(370,170,"no");
outtextxy(370,455,"no"); outtextxy(210,165,"no"); outtextxy(327,385,"yes");
outtextxy(310,235,"yes"); settextstyle(2,0,4); outtextxy(565,105,"continue to");
outtextxy(565,120,"next page"); outtextxy(70,85,"from previous");
outtextxy(80,100,"page"); return(0); }
comser2( )
( settextstyle(2,0,4); setcolor(15); settextjustify(0,2);
outtextxy(47,157,"Enter a number that is");
outtextxy(47,172,"not used by any server"); setcolor(0);
outtextxy(450,300,"Do the loaded driver");
outtextxy(450,315,"settings match that ");
outtextxy(450,330,"for the network disk ");
outtextxy( 450,345,"coprocessor board"); setcolor(15);
outtextxy(45,350,"Load the DISKSET to check the Hard Disk");
outtextxy(45,365,"and controller configuration .");
outtextxy(45,380,"Make sure each Hard Disk is assigned to ");
outtextxy(45,395,"the correct controller number.");
outtextxy(45,420,"Select the driver settings to match the ");
outtextxy(45,435,"hardware settings. or set the disk ");
outtextxy(45,450,"coprocessor board to match the driver ."); return(0); }
a21( )
( settextstyle(2,0,4); settextjustify(1,1); moveto(200,70);outtext("Is the");
moveto(200,85);outtext("internal net-");
moveto(200,100);outtext("work number");
moveto(200,115);outtext("unique?");return(0); }
a22( )
{settextstyle(2,0,5); settextjustify(1,1); moveto(400,75);outtext("Does");
moveto(400,92);outtext("disk driver"); moveto(400,109);outtext("load?");
return(0); }
a23( )
( settextstyle(2,0,5); settextjustify(1,1); moveto(400,235);outtext("Error");
moveto(400,252);outtext("message?"); return(0); }
a24( )
{ settextstyle(2,0,5); settextjustify(1,1); moveto(400,375);outtext("Do");
moveto(400,392);outtext("setting"); moveto(400,409);outtext("match"); return(0); }
a25( )
{ settextstyle(2,0,5); settextjustify(1,1); moveto(210,220);outtext("See");
moveto(210,235);outtext("System"); moveto(210,250); outtext("Messages");
moveto(210,265);outtext("manual"); return(0); }
```